

Some of Verge's major works include:

Elizabeth Bay House, for the then Colonial Secretary Alexander Macleay, Sydney's **Theatre Royal**, the first building in Australia specifically designed and built as a theatre; **Camden Park, Tusculum** at Potts Point and **Lyndhurst** at Glebe.

2. Dr. Jean Charles Baptiste Lamonnerie (dit Fattorini)

(1787 - 1853)

Dr Fattorini was one of the most colourful identities in Port Macquarie in the late 1830's and 40's. Legends and stories abound, one in particular is that he was the son of Napoleon, his mother being one of the General's mistresses during an invasion.

He came to Port Macquarie in 1836 as Government Medical Officer and later went into private practice. However, in 1849 the NSW Medical Board refused his registration as a qualified medical practitioner on the grounds that he had no British qualifications.

3. Major Archibald Clunes Innes

(1800 - 1857)

A former Commandant of Port Macquarie, Innes is perhaps more widely remembered as one of the first to apply to take up land when the area opened up to free settlement in 1830, and for his entrepreneurial activities and his homestead overlooking Lake Innes.

Innes married Margaret Macleay, a daughter of Alexander Macleay the Colonial Secretary of New South Wales - the highest ranking public servant in the colony.

Innes' remains had lain for over a century at Newcastle, when the Newcastle City Council decided to convert a burial ground to a park for passive recreation. The removal of his memorial stone was the result of protracted negotiation between the Apex Club of Glen Innes, the Port Macquarie Historical Society - at that time named the Hastings District Historical Society and the Diocese of Newcastle. As a result of an amicable agreement between the parties, the stone now lays beside other family members in this cemetery.

4. Reverend John Cross

(1781 - 1858)

After receiving his appointment of a Chaplaincy in New South Wales he arrived at Port Jackson on 26 June, 1819.

After having assisted the Reverend Samuel Marsden, Principal Chaplain, and being the Chaplain of Windsor, he was appointed to the Chaplaincy of St Thomas' at Port Macquarie on 4 December, 1827 by the Governor of New South Wales.

For 16 years he was the only Clergyman in the County or District, but his labours were chiefly confined to the Town of Port Macquarie, with its Gaol, Hospital and Military Barracks. For 30 years he continued to perform his duties almost up to the day of his death.

Other persons of note buried in this Cemetery and whose graves can be seen are:

- a. **Jeremiah Warlters - (1788 - 1869)**
Prominent land holder and businessman.
- b. **Horatio Thomas Norris Tozer - (1817 - 1865)**
Prominent storekeeper and wool merchant.
- c. **James Blair - (died 1852)**
Manager of 'Settlement Farm' and 'Goolawa'.
- d. **Rev. Frederick William Kemp - (died 1877)**
Pastor of Port Macquarie and Macleay Districts.
- e. **William Wilson - (died 1836)**
Superintendent of convicts from 1830 - 1836.
- f. **Major James Henry Crummer - (1792 - 1867)**
Police Magistrate from 1858 - 1864.

Acknowledgement

Information for this brochure has, in part, come from the publication
Port Macquarie—The Winding Sheet.
published by the Port Macquarie Historical Society Inc.
Copies of the publication are available from the
Port Macquarie Historical Society.

The Second Burying Ground

Port Macquarie Historic Cemetery



Hastings
Heritage Information 2003

The first burials in Port Macquarie took place at what is now known as Allman Hill in 1821. With the untimely death of James McMahon on 22 July, 1821 Captain Allman decided to set aside an area for a burying ground. Realising that in life there was death, he had to decide its location in the Settlement. The absence of wheeled vehicles at the time and a highly vegetated country side, was probably the determining factor that the area should be on rising ground overlooking the mouth of the Hastings. It offered convenience, easy tilling, good drainage and remoteness from the centre of the Settlement.

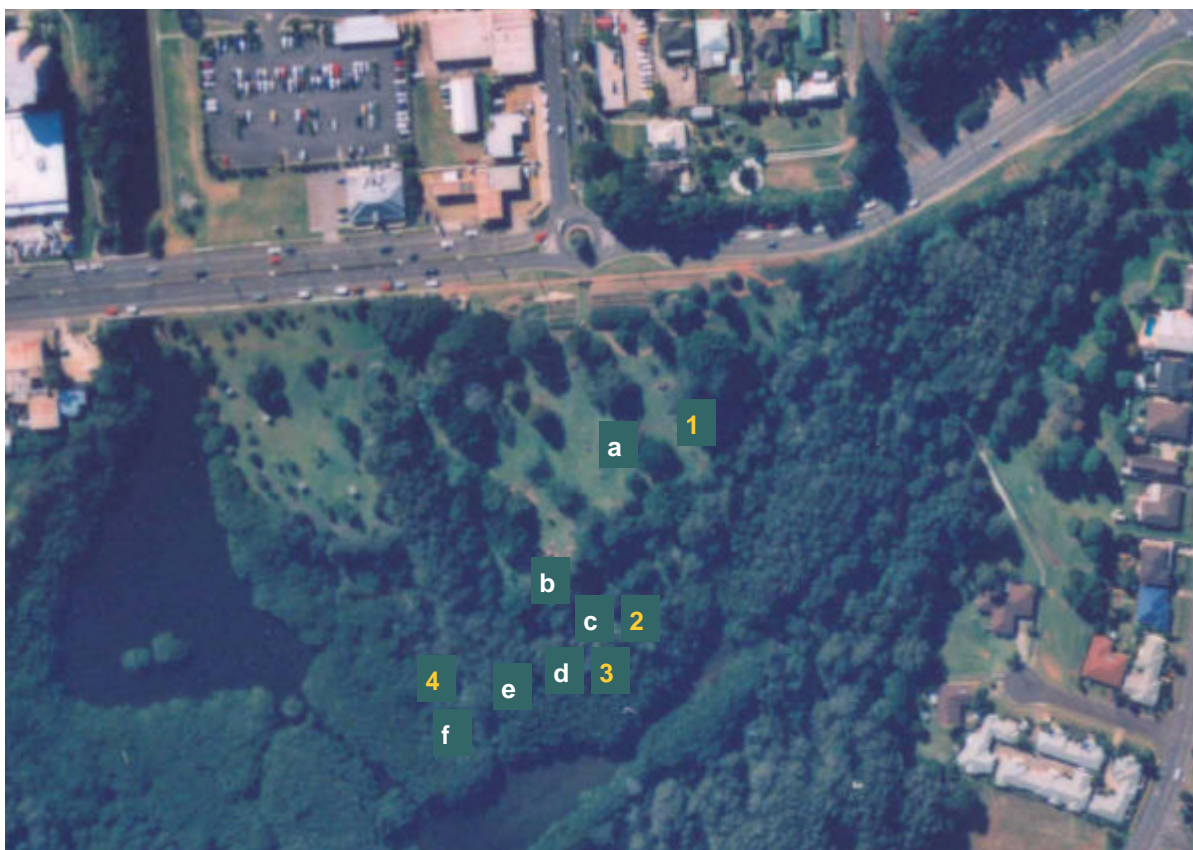
Allman Hill is located at the eastern end of Clarence Street overlooking the Hastings River entrance and Town Beach. Its twenty eight (28) burials by 1824 saw its closure, however, four (4) monuments remain.

With the closure of the first burying ground, the rise in population and the inevitable increase in deaths, it became necessary to seriously plan for a new burying ground.

The topography of Port Macquarie, bounded as it is by water, determined that the most convenient place at the time was to be on a peninsular, a short distance southward of the settlement's centre at the confluence of Wright and Kooloonbung Creeks.

The site had been noted earlier by Lieutenant John Oxley, Surveyor General, in his diary of 1818 as bushy; as such, the four odd acres (1.6 hectares) would have had to be thoroughly cleared before any internments could have taken place. Whether this was done prior to the first burial of Elizabeth Murphy by the Reverend Thomas Hassall on 15 November, 1824 or whether Captain Allman had had the land prepared prior to this to cultivate the cotton seed he had been issued with has not been substantiated.

In any case the first burials commenced at the southern end of the peninsular under the rites of the Established Church.



Kooloonbung Creek Nature Park

Covering some 52 hectares, the Park has been developed to preserve an area of natural bushland with walking tracks and boardwalks where visitors can wander and enjoy the beauty of the area and its various ecosystems.

The Park has been developed and maintained by the Friends of Kooloonbung Creek Nature Park and Hastings Council. The Friends have been assisted by individuals, schools, community groups and the Australian Plant Society.

There are ten entrances to the Park and persons using wheelchairs or motorised scooters can enjoy most of the Park.

The Cemetery

Nearly 1500 soldiers, convicts and settlers were buried here between 1824 - 1886. Although the cemetery officially closed in 1886, further burials were reported after this date. Today, over 110 graves can be seen, and information on more than 1350 persons buried in this Cemetery can be found in 'Port Macquarie - The Winding Sheet'.

The Cemetery, located at the junction of Gordon and Horton Streets, is of State heritage significance and classified by the National Trust of Australia (NSW). It forms part of the Kooloonbung Creek Nature Park.

Noteworthy persons whose monuments can be seen are John Verge - Colonial Architect, Dr. Jean Baptiste Charles Lamonnerie (dit Fattorini), members of the Innes family and Rev. John Cross - Colonial Chaplain.

1. John Verge

(1782 - 1861)

Upon arriving in Sydney in late 1828 Verge took up a land grant near Dungog, NSW which allowed him to establish his version of an English Gentleman's Country Estate, which he named 'Lyndhurst Vale'. By 1830 he was making himself known as an Architect and Builder and as Sydney grew in importance, as a centre of commerce, Verge's clientele soon included the Colony's most important citizens such as John Macarthur and William Charles Wentworth.

He retired from Architecture in 1837 and he obtained a second land grant on the Macleay River which he named 'Austral Eden'.